

The logo for Krube, featuring the word "krube" in a bold, lowercase, sans-serif font. The letter "k" is black with a small orange dot above it. The "u" is black with a small orange dot above it. The "b" is black with a small orange dot above it. The "e" is black with a small orange dot above it. The logo is enclosed in a white circle with a blue border.

krube

SPECIFICATION

MODEL
K-AC280-R220-25

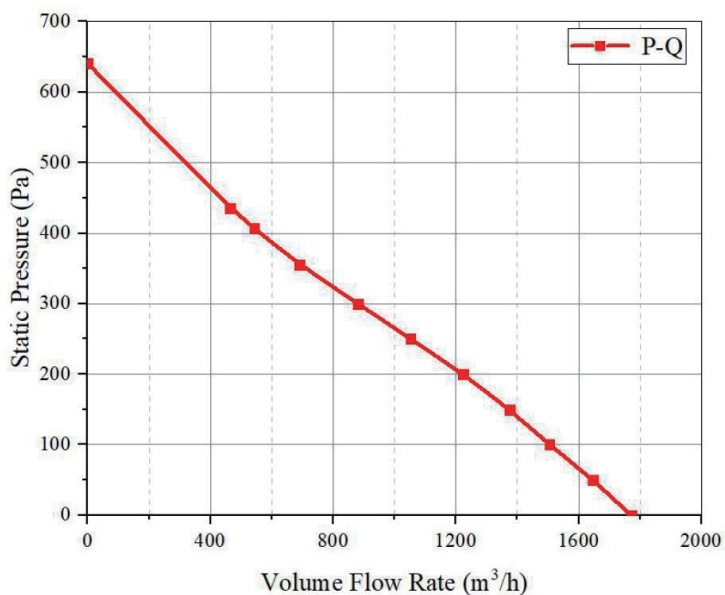
1. PERATING ENVIRONMENT AND FAN LIFE

Item	Units	Data	Remark
Operating temperature	°C	-40 ~ 65	
Operating humidity	% RH	5 ~ 95	
Storing temperature	°C	-40 ~ 80	
Storing humidity	% RH	5 ~ 95	
Type of protection		IP44	The first digit represents dust prevention, and the second digit represents waterproof level
Insulation class		F	150 °C for Class F
Life time	Hour	40,000	At nominal supply voltage, running at full speed, environment temperature 40°C

2. ELECTRICAL PERFORMANCE

Item	Units	Data	Remark
Nominal supply voltage	V	220	
Operating voltage	V	165~254	
Capacitor	uF/V	8 / 450	
Frequency	Hz	50	
Rotational speed	r/min	2570	± 5%
Power input	W	203	± 10%
Current	A	0.88	± 10%

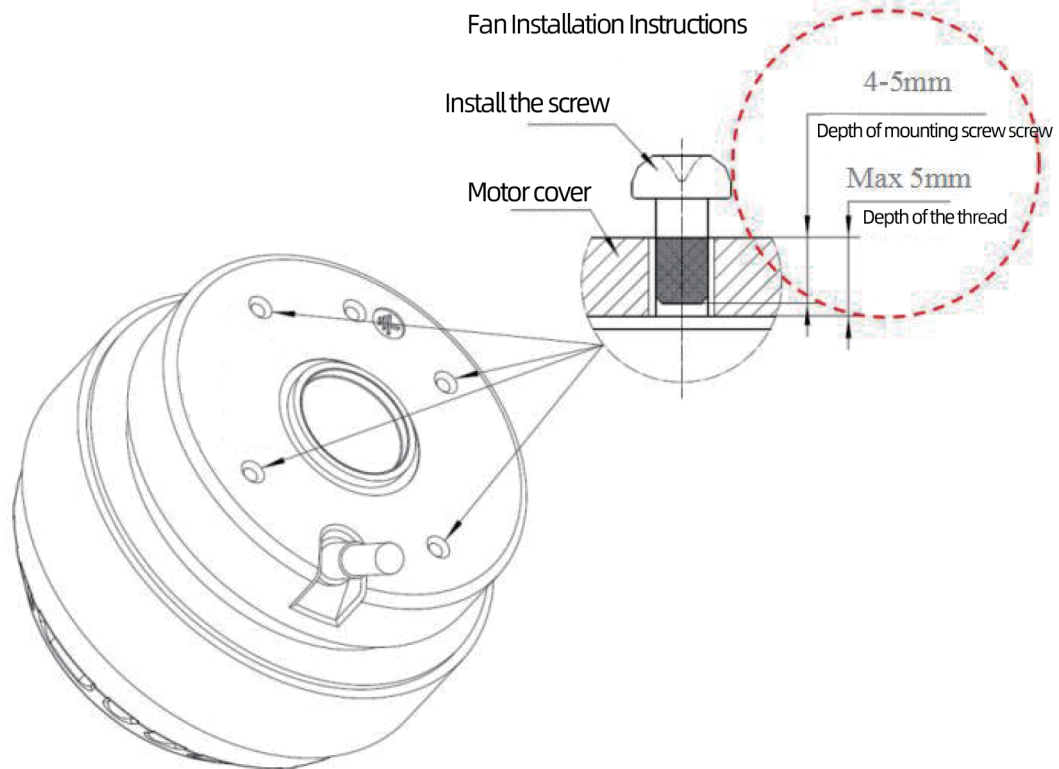
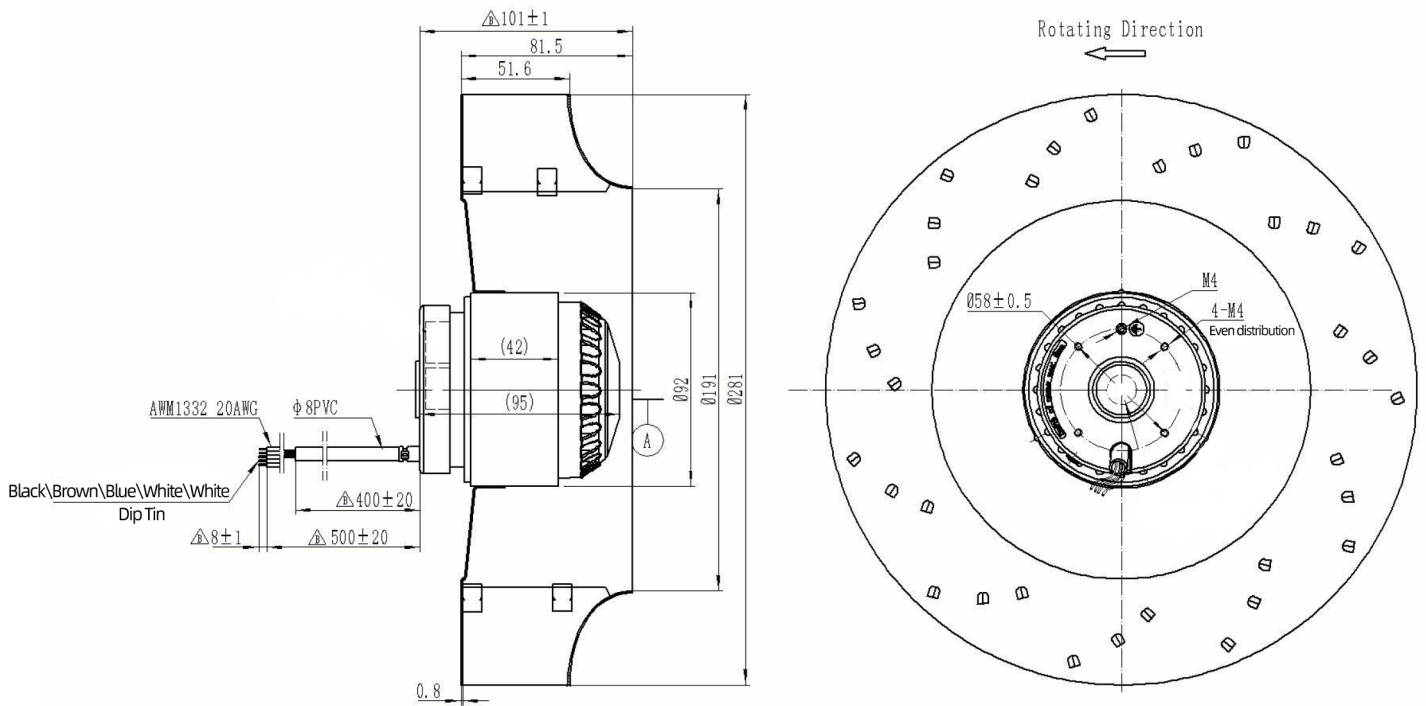
3. CURVE



220V / 50Hz				
Static Pressure	Air Flow	Power	Speed	Noise
Pa	m³/h	W	r/min	dB
0	1770	203	2577	
50	1647	217.9	2508	
100	1505	231.9	2433	
150	1374	244.1	2370	
200	1224	255.5	2296	
250	1052	263.5	2227	
300	881	269.1	2195	
355	691	268.1	2188	
407	543	259.1	2252	
435	465	252.7	2295	
641	0	179.4	2655	

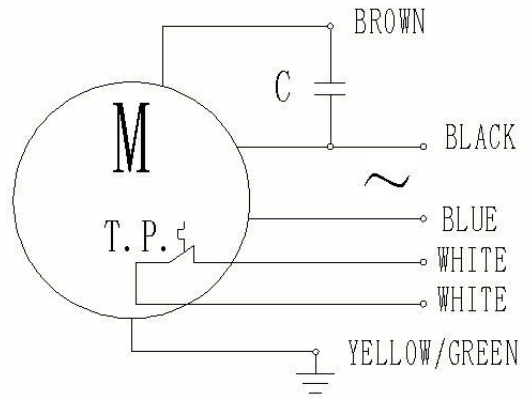
4. SIZE AND WIRING

4.1 Size



4.2 Wiring

Color	Black	Brown	Blue	Yellow/Green	White	White
Function	Main	Vice	Common port	Earth	T.P.	T.P.



5. NAMEPLATE, LOGO AND ACCESSORIES

5.1 Nameplate			
	<p>MODEL:K-AC280-R220-25 220V 50Hz 8uF/450V 203W 0.88A 2570rpm 2P CLASS:F</p>		
5.2 Accessories	Inlet ring	<input checked="" type="checkbox"/> Yes, <input type="checkbox"/> No	
	Capacitor	<input type="checkbox"/> Yes, <input checked="" type="checkbox"/> No	
	Connectors	Linker (<input type="checkbox"/> Yes, <input checked="" type="checkbox"/> No)	
		Terminal (<input type="checkbox"/> Yes, <input checked="" type="checkbox"/> No),	

Warning:

1. The fan and motor must be used within the prescribed scope of temperature and humidity otherwise it will cause an unexpected damage.
2. Provide the right voltage according to the nameplate otherwise it will damage the product.
3. Wiring depends on the wiring diagram and please connect the earth ground if required. We don't suggest to use the extension cord .Any wrong connection may cause the damage of the fan.
4. Be careful when moving the fan and do not take the blades as a handle because it will cause the distortion and chatter.
5. Connect the thermostat if required otherwise it would damage the motor because of the over temperature.
6. The length of the mounting screws shall not exceed the requirement, otherwise the fan will be damaged.
7. Do not disassemble the fan arbitrarily. It may hurt the capacity of water tightness and dynamic balance or cause other serious problems.
8. The over current protector is necessary in case the damage from the over current.
9. Install the fan as required, any other installing direction would affect the service life of the product.
10. The fan with inlet ring should be installed follow the requirements or it will affect the performance.
11. Users should use the standard cable when install the fan otherwise it will affect the water tightness.
12. The fan should keep away from the children especially the blade and electric parts .And the children are not allowed to operate the fan alone.

Please be informed that we are not responsible for any damage or accidents caused by violating above rules to install and operate the fan.